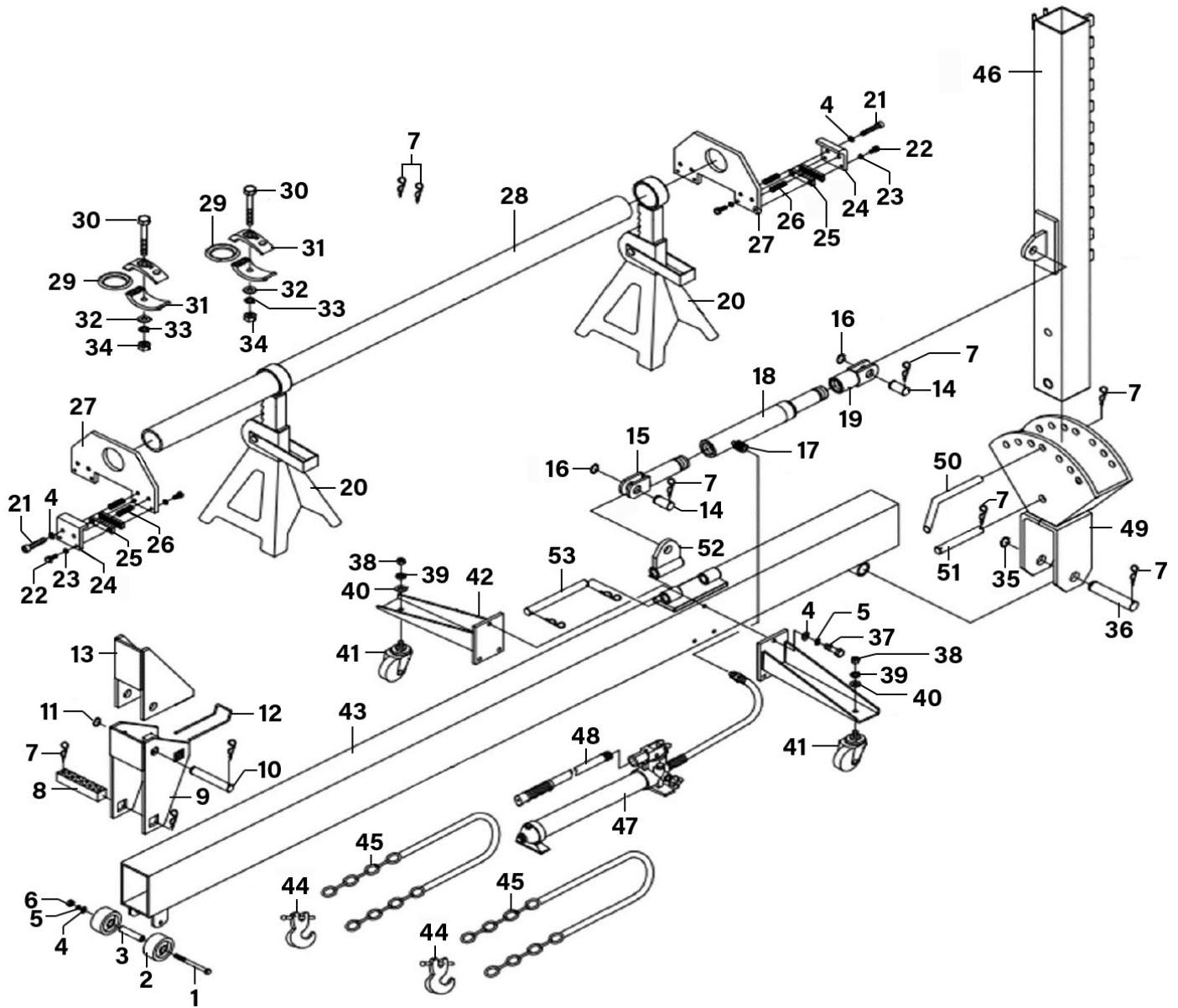


Parts Information:  
**Straightener Kit 10tonne with Variable Upright**  
**Model No: DZRE92/C.V2**



**NOTE:** It is our policy to continually improve products and as such we reserve the right to alter data, specifications and component parts without prior notice. There may be alternative versions of this product, please contact us should you require this information.

**IMPORTANT:** No liability is accepted for incorrect use of product. Spare parts must be fitted by a competent person

**WARRANTY:** Guarantee is 12 months from purchase date, proof of which will be required for any claim.



Parts Information:  
**Straightener Kit 10tonne with Variable Upright**  
**Model No: DZRE92/C.V2**

Item	Part No.	Description
1	HHB10118.S	Hex Head Bolt M10 x 118mm
2	DZRE92CV2.02	Wheel, Fixed White Plastic (D:74 W:23 B:17)
3	DZRE92CV2.03	Bushing
4	FWM10.S	Flat Washer M10 Zinc
5	SWM10.S	Spring Washer M10 Zinc
6	SN10.S	Steel Nut M10 Zinc
7	DZRE92CV2.07	R-Clip 5 X 3mm
8	DZRE92CV2.08	Stop Block
9	DZRE92CV2.09	Bottom, Anchor Post
10	DZRE92CV2.10	Spindle, Anchor Post
11	DZRE92CV2.11	External Circlip 24.4mm ID
12	DZRE92CV2.12	U-Pin
13	DZRE92CV2.13	Top, Anchor Post
14	DZRE92CV2.14	Short Pin
15	DZRE92CV2.15	Ram Attachment (Female)
16	DZRE92CV2.16	External Circlip 23.0mm ID
17	DZRE92CV2.17	Ram Coupling
18	DZRE92CV2.18	Ram Assembly
19	DZRE92CV2.19	Ram Attachment (Male)
20	DZRE92CV2.20	Support Stand
21	SCB1055.SB	Socket Cap Bolt M10 X 55mm Black
22	SS820.S	Hex Head Set Screw M8 X 20 Zinc
23	FWM8.S	Flat Washer M8 Zinc
24	DZRE92CV2.24	Adjustable Clamp Plate
25	DZRE92CV2.25	Jaw Face
26	DZRE92CV2.26	Spring Dia 14.3mm
27	DZRE92CV2.27	Support Plate

Item	Part No.	Description
28	DZRE92CV2.28	Cross Tube
29	DZRE92CV2.29	Pull Ring
30	HHB14100.S	Hex Head Bolt M14 x 100mm
31	DZRE92CV2.31	Pull Clamp
32	FWM16.S	Flat Washer M16 Zinc
33	SWM14.S	Spring Washer M14 Zinc
34	SN14.S	Steel Nut M14 Zinc
35	DZRE92CV2.35	External Circlip 27.7mm ID
36	DZRE92CV2.36	Spindle
37	DZRE92CV2.37	Bolt
38	SN12.S	Steel Nut M12 Zinc
39	SWM12.S	Spring Washer M12 Zinc
40	FWM12.S	Flat Washer M12 Zinc
41	DZRE92CV2.41	Wheel, Castor (76x12x30x114)
42	DZRE92CV2.42	Castor Wheel Arm Support
43	DZRE92CV2.43	Main Beam
44	DZRE92CV2.44	Hook Assembly
45	DZRE92CV2.45	Chain 2080mm
46	DZRE92CV2.46	Post
47	RE97.10-01	Pump & Hose Assembly 10tonne
48	RE97.10-01.02	Handle (c/w Grip)
49	DZRE92CV2.49	Tilting Support
50	DZRE92CV2.50	Lock Pin
51	DZRE92CV2.51	Pin
52	DZRE92CV2.52	Hinge
53	DZRE92CV2.53	Hinge Pin

**NOTE:** It is our policy to continually improve products and as such we reserve the right to alter data, specifications and component parts without prior notice. There may be alternative versions of this product, please contact us should you require this information.

**IMPORTANT:** No liability is accepted for incorrect use of product. Spare parts must be fitted by a competent person

**WARRANTY:** Guarantee is 12 months from purchase date, proof of which will be required for any claim.

**Sealey Group**, Kempson Way, Suffolk Business Park, Bury St Edmunds, Suffolk. IP32 7AR



01284 757500



01284 703534



sales@sealey.co.uk



www.sealey.co.uk